



**Ministry of  
Education, Skills,  
Youth & Information**

**Primary Exit Profile (PEP 4)**

**June 2025**

**Literacy Test**

**Time: 40 minutes**

**Write your name and the name of your school below:**

---

**Name of Student**

---

**Name of School**

---

**DO NOT OPEN THIS BOOKLET UNTIL TOLD TO DO SO**

This page is  
left blank  
intentionally

**General Instructions:**

**This test has thirty (30) questions. Answer ALL questions on the answer sheet provided.**

The poster below was displayed at a school. Examine it carefully then use it to answer questions 1 to 5.

**Go Bananas!**

**Available Daily**

**2 for 1 special on Fridays**

- gives energy
- provides nutrients for muscles
- improves concentration
- contributes to healthy skin
- good source of fibre
- helps with digestion

Source: EAASB

1. On which day are students able to save money when they buy bananas?
  - A. Mondays
  - B. Tuesdays
  - C. Thursdays
  - D. Fridays
  
2. How often are bananas available at the canteen?
  - A. every day
  - B. once per week
  - C. twice per week
  - D. only on Fridays

3. Where would this poster **most likely** be placed?  
In the \_\_\_\_\_.
- A. principal's office
  - B. guidance counsellor's office
  - C. canteen
  - D. library
4. Which of the following benefits of eating bananas would be **most useful** for students preparing for an examination?
- A. helps with digestion
  - B. improves concentration
  - C. good source of fibre
  - D. contributes to healthy skin
5. Which of the following **BEST** describes the main idea in the poster?
- A. Ripe bananas cost a lot less than green bananas.
  - B. Ripe bananas are healthier than green bananas.
  - C. Bananas are available throughout the year.
  - D. Bananas have several health benefits.

Read the passage below then use it to answer questions 6 to 9.

### Calico Jack

Negril is a favourite tourist destination today. People began visiting Negril in the 1960's but it became very popular in 1977. However, that was not always so. Negril was originally inhabited by the Tainos before the Spanish took over the town in 1494.

For centuries, Negril was a quiet fishing village. Many pirates made stops there. It was in Negril that the English pirate, Calico Jack was captured on October 31, 1720.

Calico Jack spent most of his time in Cuba, but frequently visited Bahamas and Jamaica. He was later brought to Spanish Town to be tried for the crimes he committed.

Source: (Adapted) <https://www.thecliffjamaica.com/discover-negril/history>

6. For what is Negril *most known*?
- A. Tainos
  - B. pirates
  - C. tourism
  - D. fishing
7. When did the Spanish come to Negril?
- A. 1960
  - B. 1977
  - C. 1494
  - D. 1790

8. Which group of persons were the first to live in Negril?
- A. fishermen
  - B. Spanish
  - C. pirates
  - D. Tainos
9. In which country did Calico Jack spend most of his time?
- A. Jamaica
  - B. England
  - C. Cuba
  - D. Bahamas

The table below shows food being sold at a school for a week leading up to Jamaica Day celebrations. Examine the table then use it to answer questions 10 to 15.

Monday	Tuesday	Wednesday	Thursday	Friday
Ackee and Saltfish with Roast Breadfruit \$800	Cornmeal Pudding \$400	Jerked Chicken with Rice and Peas \$1200	Jerked Chicken with Rice and Peas \$1200	Drops (coconut cake) \$200
Mackerel Run Dung and Green Bananas \$600	Potato Pudding \$400	Curried Goat with Plain Rice \$1500	Curried Goat with Plain Rice \$1500	Grater Cake \$200
Cook Up Saltfish with Roast Yam \$800	Toto \$70	Oxtail with Gungo Rice and Peas \$2000	Oxtail with Gungo Rice and Peas \$2000	Asham \$100
Saltfish Fritters \$200	Bulla \$100	Steamed Fish with Crackers and Okra \$3000	Escoveitched Fish and Fried Bammy \$2800	Peanut Cake \$200

Source: EAASB

10. On which day will ackee and saltfish be available?
  - A. Monday
  - B. Tuesday
  - C. Wednesday
  - D. Thursday
  
11. What kind of food will be served on Tuesday?
  - A. candy items
  - B. baked items
  - C. lunch items
  - D. vegetable items

12. Which is the most expensive item?
- A. Oxtail with Gungo Rice and Peas
  - B. Steamed Fish with Crackers and Okra
  - C. Curried Goat with Plain Rice
  - D. Escoveitched Fish and Fried Bammy
13. How many items cost less than \$100?
- A. 4
  - B. 3
  - C. 2
  - D. 1
14. On which **two days** will similar items be sold?
- A. Monday and Tuesday
  - B. Tuesday and Wednesday
  - C. Wednesday and Thursday
  - D. Thursday and Friday
15. Which word **BEST** describes the information given in the table?
- A. menu
  - B. recipe
  - C. dessert
  - D. ingredients

Read the passage below then use it to answer questions 16 to 20.

### The Road to Portland



“Daddy, where are we now?”

“We are passing Temple Hall now, Kayla. We are still more than an hour away from getting to Dragon Bay in Portland.”

The golden sunshine was just coming up from behind the hills. Kayla noticed that they were now going uphill and the car became a lot cooler than it was before. The road became narrow and winding and Kayla was a bit afraid. But she did not want her dad or her twin sisters to know.

To her left, the hillside was so close to the road it felt like you could put a hand out the window and touch it. There were also a few areas where it appeared as if the soil had become loose and slipped down the hillside. Kayla turned her head away in order to escape the thought of a landslide occurring while they were on the road. Just then, she saw a sign saying “Welcome to Castleton Botanical Gardens.”

To the right of the road was a river. She learnt about it last year when she was in grade 5. It was the Wag Water River. It was just as winding and long as the road. But it was below the road. It was beautiful!

But everyone else seemed to be missing nature’s slideshow. Her Mom was responding to emails on her phone, her twin sisters were fast asleep. And dad was too busy paying attention to the road.

Source: EAASB

16. How many persons were in the car?
- A. 3
  - B. 4
  - C. 5
  - D. 6
17. Where was the family going?
- A. Castleton Botanical Gardens
  - B. Wag Water River
  - C. Dragon Bay
  - D. Temple Hall
18. Which grade was Kayla in *at the time the story was being told*?
- A. Grade 6
  - B. Grade 5
  - C. Grade 4
  - D. Grade 3
19. What time of day did the story **most likely** take place?
- A. at about noon
  - B. early in the morning
  - C. in the evening
  - D. late in the night
20. Which paragraph suggests that Kayla was a bit annoyed with her family?
- A. 1
  - B. 2
  - C. 3
  - D. 4

The notice below was placed on a school's notice board. Read it carefully then use it to answer questions 21 to 26.

## NOTICE



There will be a Social Studies field trip to the **Rose Hall Great House** in Montego Bay for students of Grade 5 and Grade 6.

- Trip date for Grade 5 students will be Wednesday, May 14, 2025
- Trip date for Grade 6 students will be Wednesday, May 21, 2025

Permission slips are now available to be collected from Mrs Silvera in the front office.

Note: *The date for the Science field trip has not yet been decided.*

Signed:  
**Mrs Duvalier**  
Grade 6 Co-ordinator  
April 9, 2025

Source: EAASB

21. What is the date of the notice?
- A. May 14, 2025
  - B. April 9, 2025
  - C. May 21, 2025
  - D. April 2, 2025
22. For which subject will the field trip to Rose Hall Great House be **most helpful**?
- A. Mathematics
  - B. Language Arts
  - C. Science
  - D. Social Studies
23. Who should students go to for permission slips?
- A. the head girl
  - B. Mrs Silvera
  - C. the principal
  - D. Mrs Duvalier
24. When will grade 6 students be going on the field trip?
- A. May 14, 2025
  - B. April 12, 2025
  - C. May 21, 2025
  - D. April 9, 2025
25. Mrs Silvera is **most likely** the \_\_\_\_\_.
- A. school bus driver
  - B. security guard
  - C. school nurse
  - D. principal's secretary
26. When will the Science field trip **most likely** take place?
- A. on April 9
  - B. a week before April 9
  - C. two days before April 9
  - D. after April 9

Read the passage below then use it to answer questions 27 to 30.

### The Pink Panther

The Pink Panther is a cartoon series that was shown on local television station, Jamaica Broadcasting Corporation (JBC) in the late 1970's into the 1980's. If you are wondering about JBC, it is the same television station you now know as Television Jamaica (TVJ).



- 5 At that time there was only one television station available to viewers in Jamaica. But wait, there's more! Programmes were only shown after 4:00 pm because the channel was off air from midnight to 4:00 pm. Imagine that!

- 10 At that time, cartoons were the favourite of many children and television watching was a new and exciting way to be entertained. Many children would make sure to complete their homework early. Then they would ask their parents' permission to turn on the television. The Pink Panther was popular because he was always getting into trouble without meaning to. And he was usually able to find a way to get out of trouble. He did all this while giving kids a good laugh. Sure there were other cartoons like The Flintstones, Tom and Jerry, Top Cat, and Super Friends but The Pink Panther was the funniest!

Source: EAASB

27. How many television stations did Jamaica have in the 1980's?
- A. 1
  - B. 2
  - C. 3
  - D. 4

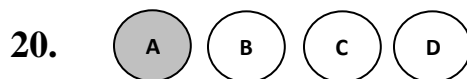
28. The Pink Panther was what kind of television programme?  
It was a/an \_\_\_\_\_.
- A. advertisement
  - B. movie
  - C. cartoon
  - D. documentary
29. Which **BEST** explains why children enjoyed watching The Pink Panther?
- A. It was being shown on JBC.
  - B. It was funny.
  - C. Teachers were watching it.
  - D. Many adults were watching it.
30. “But wait, there’s more!” suggests that \_\_\_\_\_?
- A. additional information is coming
  - B. some programmes were not interesting
  - C. most children were asleep by 4:00 p.m.
  - D. some cartoons were not funny

**END OF TEST**

## INSTRUCTIONS

### **DO NOT OPEN THIS BOOKLET UNTIL YOU ARE TOLD TO DO SO**

1. This test has 30 questions. You are to shade the correct answer to each question on the Answer Sheet provided.
2. Do not change anything that is printed on the Answer Sheet.
3. If you wish to change your answer, you are to erase the first shading completely. Do **NOT** leave 2 shaded spaces in the same line.
4. Make sure to shade the answer you have chosen for a question in the correct space. For example, if you think **A** is the correct answer to question 20, mark your Answer Sheet as shown below.



5. Do **ALL** rough work in this booklet. **Do not make any stray marks on the Answer Sheet.**
6. The Answer Sheet may have space for more answers than the number of questions on the test. Use **ONLY** the spaces for questions **1 - 30**.
7. Start working when you are told.
8. Stop working when you are told. Place the Answer Sheet in the question booklet and hand it to the invigilator.
9. Do **NOT** fold, tear or damage the Answer Sheet.